

ROOM HIRE INFOGRAPHIC



GUNWHARF

ST GEORGES CHURCH, PORTSEA

Located near Gunwharf Quays. The church includes a recently refurbished commercial style kitchen and 3 spaces to hire :

- **Main Space**
- **Large Hall**
- **Small Hall**

[Book Now](#)



GUNWHARF

MAIN SPACE

Dimensions : 15 x 12 Meters

Maximum Capacity : 350 People

COST : **£50 per hour / £250 Half Day (6hrs) / £500 All day**



NOTE

- Cost of **ALL** hires includes time needed to set up and pack down.
- We do not hire out our tech. However, subject to the teams availability we may be able to arrange technical support for an extra charge per hour.

GUNWHARF

LARGE HALL

Dimensions : 6 x 12 Metres

Maximum Capacity : 75 - 100 People

COST : £40 per hour



GUNWHARF

SMALL HALL

Hall Dimensions : 7 x 6

Hall Capacity : 15 to 20

COST : **£20 per hour**



KITCHEN

All Hirers are welcome to use our kitchen to prepare snacks and drinks. However we ask that you bring your own supplies. Should you need to hire out the kitchen exclusively or cook large portions of food please make this clear on the booking form.



GUNWHARF

FREQUENTLY ASKED QUESTIONS

- **Is there parking onsite?**

There is no free onsite parking. However, there are many spaces available on St Georges Square payable via the Ringo App.

- **Will I have access to the toilets?**

You will have access to fully stocked Male, Female and Disabled Toilets.

- **Is there storage available**

If your event lasts for more than 24 hours, temporary storage can be arranged (subject to availability). However, we do not have capacity for long term storage

- **Are there chairs and tables I can hire?**

We have up to 120 chairs & 15 trestle tables which may be available for use. (subject to availability)

- **Do you hire the halls out for parties?**

Unfortunately,we do **NOT** hire the halls out for parties

- **Do you hire the halls out on a Sunday?**

Unfortunately,we do **NOT** hire the halls out on a Sunday

COPNOR

ST ALBANS CHURCH, PORTSEA

This location includes 3 spaces that are available to hire:

- **Main Space**
- **A Large Hall**
- **Small Hall**

[Book Now](#)



COPNOR

MAIN SPACE

Maximum Capacity: 250 People

Please enquire for more information

COST : £50 per hour / £250 for all day

NOTE

- Cost of **ALL** hires includes time needed to set up and pack down.
- We do not hire out our tech. However, subject to the teams availability we may be able to arrange technical support for an extra charge per hour.



COPNOR

LARGE HALL

Dimensions : 7 x 12 Metres

Capacity : 50 to 75 People

COST : £40 per hour



COPNOR

SMALL HALL

Hall Dimensions : 5 x 5

Capacity : 20 to 30 People

COST : £20 per hour



KITCHEN

All Hirers are welcome to use our kitchen to prepare snacks and drinks. However, we ask that you bring your own supplies. Should you need to hire out the kitchen exclusively or cook large portions of food please make this clear on the booking form.



COPNOR

FREQUENTLY ASKED QUESTIONS

- **Is there parking onsite?**

There is no free onsite parking. However, parking around the church is free.

- **Do you hire the halls out for parties?**

Unfortunately, we do **NOT** hire the halls out for parties

- **Is there storage available**

If your event lasts for more than 24 hours, temporary storage can be arranged (subject to availability). However, we do not have capacity for long term storage.

- **Are there chairs and tables I can hire?**

We have up to 100 chairs & 10 trestle tables which may be available for use. (subject to availability)

- **Do you hire the halls out on a Sunday?**

Unfortunately, we do **NOT** hire the halls out on a Sunday

CITY

ALL SAINTS CHURCH, PORTSEA

Located near Commercial Rd., this location includes a recently refurbished commercial style kitchen & meeting space and 2 other main spaces :

- **Main Space**
- **Owen Room & Kitchen**
- **Office Spaces (Subject to availability)**

[Book Now](#)



CITY

MAIN SPACE

Dimensions : 15 x 12 Meters

Maximum Capacity : 150 People

COST : **£40 per hour**



NOTE

- Cost of **ALL** hires includes time needed to set up and pack down.
- We do not hire out our tech. However, subject to the teams availability we may be able to arrange technical support for an extra charge per hour.

CITY

OWEN ROOM & KITCHEN

Dimensions: 9 x 14 Metres

Maximum Capacity : 50 People

COST: £30 per hour

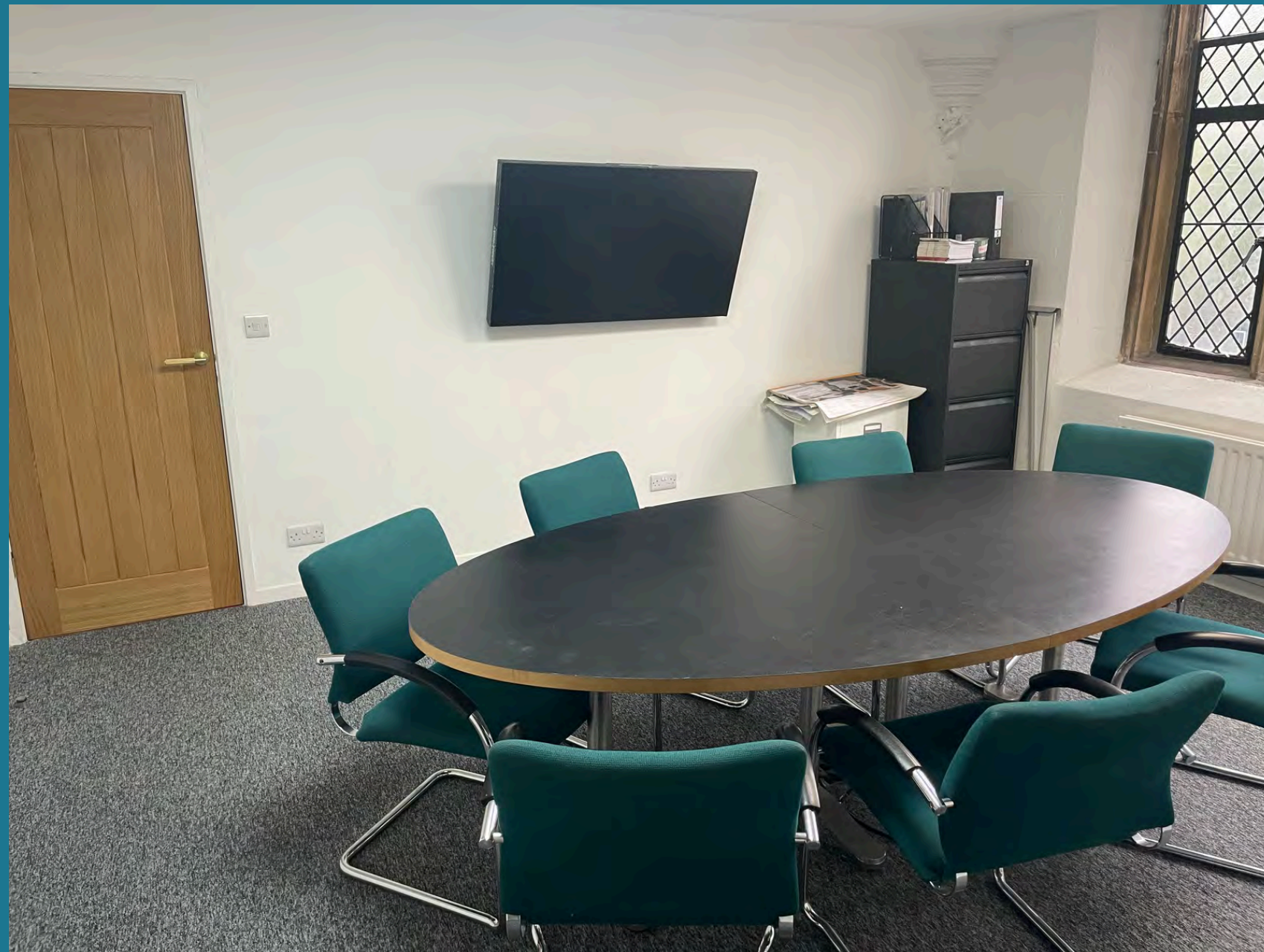
KITCHEN:

All Hirers are welcome to use our kitchen to prepare snacks and drinks. However, we ask that you bring your own supplies. Should you need to hire out the kitchen exclusively or cook large portions of food please make this clear on the booking form.

Exclusive use of Kitchen:

ADDITIONAL COST : £15 per hour





COATES ROOM

Dimensions : 5 x 5 Metres

Maximum Capacity : 10 People

COST : £15 per hour



CITY

FREQUENTLY ASKED QUESTIONS

- **Is there parking onsite?**

There is a small carpark in front of the church which you are welcome to use.

- **Do you hire the halls out for parties?**

Unfortunately, we do **NOT** hire the halls out for parties

- **Is there storage available**

If your event lasts for more than 24 hours, temporary storage can be arranged (subject to availability). However, we do not have capacity for long term storage.

- **Are there chairs and tables I can hire?**

We have up to 120 chairs & 10 trestle tables which may be available for use. (subject to availability)

- **Do you hire the halls out on a Sunday?**

Unfortunately, we do **NOT** hire the halls out on a Sunday

Contact Us

Social Media


[@harbourchurchuk](#)



Contact

 hello@harbourchurchuk.org

 07525914126

 All Saints Church,
334 Commercial Rd
Portsmouth
PO1 4BT